

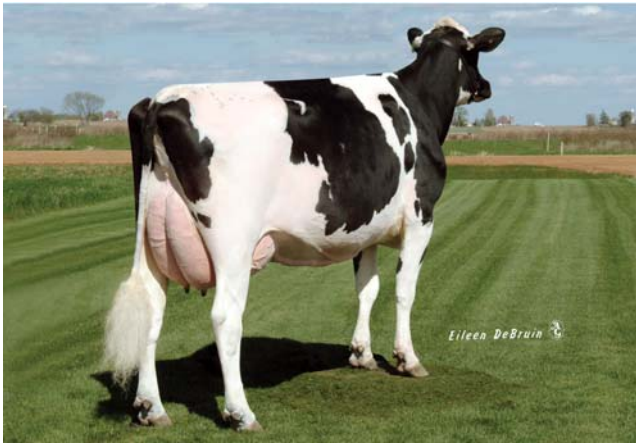
100% Registered Holstein Ancestry (RHA-NA)

COYNE-FARMS YASMINE CRI-ET
 USA 61376344 100%RHA-NA
 3-02 86 +E++V
 CTPI +1805M
 4/11/2004 FEMALE
 5461

MACE YIELD EVALUATION
 PTA +1846M +61F +49P 57%R 8/2008
 PTA +492NM -.02%F -.02%P
 PTA +3.1PL 3.15SCS -1.1DPR 8%DCE
 PTA +2.03T +2.31UDC +2.07FLC 56%R 8/2008

	AGE	X	DAYS	MILK	DCRM	%	FAT	%	PRT	DCRC	TPI
*	1-11	3	287	27800	102	3.5	975	3.2	880	90	BRABANT STAR PATRON-ET +1284M
*	2-10	3	305	35930	100	3.6	1294	3.0	1093	90	USA 2160458 100%RHA-NA TV TL
			365	38160		3.6	1372	3.1	1174		10-01 92 <u>EEEV</u> GM 8/03 01/16/1991

"GENESIS TESTED"



MACE YIELD EVALUATION
 PTA +321M +20F +17P 99%R 8/2008
 PTA +169NM +.03%F +.03%P 28%US
 PTA +.9PL 3.10SCS -1.1DPR 7%DCE
 MACE TYPE EVALUATION
 PTA +.57T +1.16UDC -1.27FLC 99%R 8/2008
 CTPI +1251C
 AQUILA LUKE GALIZIA-ET
 ITA 909004791 100%RHA-NA
 02/05/1995
 CONVERTED YIELD EVALUATION
 PTA +1158M +43F +33P 82%R 8/2008
 PTA +124NM +.00%F -.01%P
 PTA -1.0PL 3.08SCS -2.7DPR 11%DCE
 PTA +.26T +.04UDC +1.57FLC 44%R 8/2008

AQUILA PATRON LUCENTE-ET
 ITA 912027632 100%RHA-NA TV TL
 CTPI +1333M
 04/23/1997

MACE YIELD EVALUATION
 PTA +932M +33F +20P 99%R 8/2008
 PTA +161NM +.00%F -.03%P 8%US
 PTA +.6PL 3.19SCS -2.3DPR 9%DCE
 MACE TYPE EVALUATION
 PTA +1.19T +1.42UDC +1.20FLC 98%R 8/2008
 CTPI +1966
 MILKWORTH MANFRED YADDA
 USA 127281274 100%RHA-NA
 3-03 86 VEGV GMD DOM 04/11/1999
 PTA +2035M +78F +62P 74%R 8/2008
 PTA +641NM +.01%F +.00%P
 PTA +4.6PL 3.22SCS +.5DPR 8%DCE
 PTA +1.86T +1.88UDC +1.71FLC 73%R 8/2008

HA-HO CUBBY MANFRED-ET
 USA 2183007 100%RHA-NA TV TL
 5-07 82 +GVV GM 8/03 12/07/1991
 MACE YIELD EVALUATION
 PTA +1288M +42F +39P 99%R 8/2008
 PTA +390NM -.02%F +.00%P 44%US
 PTA +4.6PL 3.37SCS +2.0DPR 6%DCE
 MACE TYPE EVALUATION
 PTA -.93T -1.01UDC +.29FLC 99%R 8/2008
 CTPI +1324
 MILKWORTH MEGABUCK YEN
 USA 17326065 100%RHA-NA
 3-00 83 +V+GV 03/22/1997

	AGE	X	DAYS	MILK	DCRM	%	FAT	%	PRT	DCRC
***	1-11	3	305	29780	99	4.0	1189	3.2	957	96
			365	35730	99	4.0	1435	3.2	1159	96
***	3-05	3	305	25980	100	4.3	1111	3.8	975	97
			365	31210	100	4.3	1334	3.7	1169	97
***	5-05	3	140	11140		3.7	414	3.1	341	

	AGE	X	DAYS	MILK	DCRM	%	FAT	%	PRT	DCRC
**	2-00	2	269	20730		3.5	724	3.1	636	
**	2-11	2	305	25380	95	4.0	1020	3.2	810	80

Protein reported is crude protein.
 Underlined breakdowns done prior to 12/01/2004